

**Valve Regulated Lead Acid Battery**

Maintenance-Free Sealed Lead Acid Battery.

Absorbent Glass Mat (AGM) technology for efficient gas recombination of up to 99%.

**Design for Standby Power Applications**

**【Design Life】**

Up to 10 Years in Standby Service at 25°C  
Eurobat (20°C) : 10-12 years, Long Life

**【Operating Temperature Range】**

Nominal Operating Temperature : 25°C (77°F)  
Discharge : -15°C ~ 50°C (5°F~122°F)  
Charge: -15°C ~ 40°C (5°F~104°F)  
Storage: -15°C ~ 40°C (5°F~104°F)

**【Float Charging Voltage】**

13.5 ~ 13.8 VDC/Unit at 25°C (77°F)

**【Equalization Charging Voltage】**

14.4 ~ 15.0 VDC/Unit at 25°C (77°F)

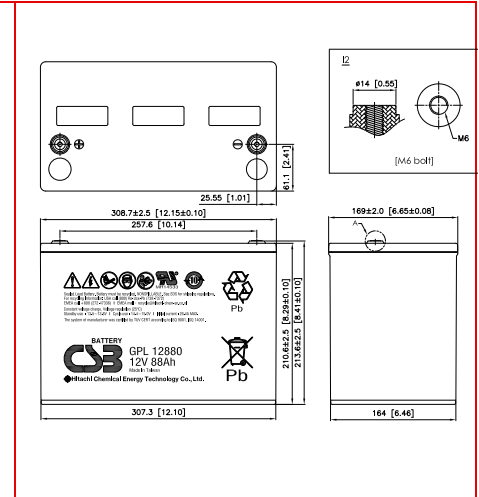
**【Self Discharge】**

Less than 10% after 90 days, can be stored up to 6 months at 25°C (77°F); Fully recharging is required before usage, and charged sooner if stored at higher temperature than 25°C (77°F).

**Specification**

Design according with IEC 60896-21/22: 2004

Nominal Voltage	12V (6 cells per unit)		
Nominal Capacity	94 Ah @20hr-rate to 1.75V per cell @25°C (77°F)		
Weight	Approx. 29.70 Kg (65.46 lbs)		
Maximum Discharge Current	800A (5sec)		
Internal Resistance	Approx. 3.6mΩ		
Short Circuit Current	2098A		
Maximum Charge Current	26.40A		
Terminal type	I2 thread lead alloy terminal to accept M6 bolt		
Terminal hardware Torque	138.6 Kgf-cm/ 120.3 lbf-in/ 13.58 N-m		
Container Material	PP (UL 94-HB) & Flame Retardant (94-V0) available upon request		
Dimensions	Length (L)	308.7±2.5 mm	12.15±0.10 inch
	Width (W)	169.0±2.0 mm	6.65±0.08 inch
	Container Height (h)	210.6±2.5 mm	8.29±0.10 inch
	Overall Height (H)	213.6±2.5 mm	8.41±0.10 inch



**Constant Current Discharge Characteristics Unit: A (25°C, 77°F)**

F.V/Time	5MIN	10MIN	15MIN	30MIN	60MIN	90MIN	2HR	3HR	5HR	8HR	10HR	20HR
1.60V	349	232	175	103	62.8	45.5	36.3	25.6	17.0	11.3	9.21	4.87
1.67V	321	225	171	102	62.4	45.2	36.0	25.5	16.9	11.2	9.12	4.84
1.70V	311	219	169	101	61.4	44.8	35.7	25.2	16.8	11.1	9.10	4.83
1.75V	274	199	163	99	60.3	43.9	35.1	25.1	16.6	11.0	8.96	4.74
1.80V	246	186	154	96.1	58.8	43.1	34.6	24.6	16.2	10.8	8.85	4.66
1.85V	215	170	138	90.3	55.8	41	32.9	23.8	15.8	10.4	8.51	4.48

**Constant Power Discharge Characteristics Unit: W (25°C, 77°F)**

F.V/Time	5MIN	10MIN	15MIN	30MIN	60MIN	90MIN	2HR	3HR	5HR	8HR	10HR	20HR
1.60V	3535	2496	1941	1177	720	535	434	306	203	136	110	58.3
1.67V	3307	2417	1919	1169	719	531	428	305	202	135	109	57.9
1.70V	3202	2373	1888	1166	716	529	426	304	201	134	108	57.8
1.75V	2995	2261	1828	1145	707	524	424	301	200	132	107	57.5
1.80V	2782	2129	1734	1113	694	516	418	298	198	130	106	57.1
1.85V	2434	1955	1581	1061	671	495	400	287	190	125	103	55.3

Please refer to the official site for the latest rating confirmation. URL: [www.csb-battery.com](http://www.csb-battery.com)

Issued: 161101

**Sales Offices**

**日立化成能源科技股份有限公司**  
Hitachi Chemical Energy Technology Co., Ltd.

**BUSINESS HEADQUARTERS**

Tel: +886-2-2880-5600  
Fax: +866-2-2888-3300

**USA OFFICE**

Tel: +1-817-244-7777 / 1-(800)3-CSB-USA (272872)  
Fax: +1-817-244-4445

**SHENZHEN OFFICE (CHINA)**

Tel: +86-755-8831-6488, 8831-6775  
Fax: +86-755-8831-6075

**EUROPE (EMEA) OFFICE**

Tel: +31(0)180-418-140  
Fax: +31(0)180-418-327

**SHANGHAI OFFICE (CHINA)**

Tel: +86-21-5046-1622, 5046-0833  
Fax: +86-21-5046-1046

**TAIPEI OFFICE**

Tel: +886-2-2880-5600  
Fax: +866-2-2888-3300

**BEIJING OFFICE (CHINA)**

Tel: +86-10-5820-5336, 5820-5338  
Fax: +86-10-5820-3053

Recognized under UL 1989,  
and certified by ISO 9001, 14001.

